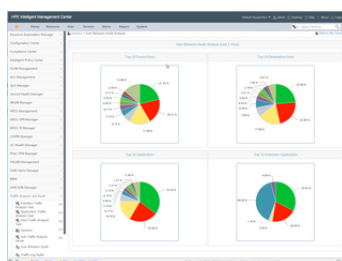




# HPE IMC USER BEHAVIOR AUDITOR SOFTWARE MODULE WITH 50-USER E- LTU (JG760AAE)

## Intelligent Management Software



### WHAT'S NEW

- Provides user data that enhances network security.
- Comprehensive log collection from devices creates safer networks.
- Ability to export and audit log files to examine for threats.

### OVERVIEW

The HPE IMC User Behavior Auditor (UBA) Software provides network administrators the ability to audit the behavior of internal users to solve security challenges. In conjunction with the HPE IMC Access Manager (UAM) Software, the IMC UBA Software is built to adapt to network environment changes.

Among the features especially helpful for network administrators are comprehensive log collections and audit functions which digest information from HTTP, FTP, and SMTP packets.

### FEATURES

#### **Greater Control Over Internal Threats Creates a More Robust Network**

The HPE IMC User Behavior Auditor (UBA) Software audits internal devices and users to protect the network from security threats.

IMC UBA Software analyzes user actions to provide data such as websites visited,

applications used, bandwidth consumed on a per device basis.

Analyzes a variety of logs containing information on device vendor, OS, and type, forwarded by devices on the network to better detect device threats.

**Handle Uncertainty with Powerful Filtering and Probe Strategies**

The HPE IMC User Behavior Auditor (UBA) Software utilizes probes to analyze incompatible network data.

Overcome uncertainty by filtering log packets and matching them against set criteria to determine anomalies to check overall network security.

**Technical specifications**

**HPE IMC User Behavior Auditor Software Module with 50-user E-LTU**

<b>Product Number (SKU)</b>	JG760AAE
<b>Differentiator</b>	HPE IMC User Behavior Software Module with 50-user E-LTU
<b>Platform required</b>	HPE Intelligent Management Center Enterprise Software HPE Intelligent Management Center Standard Software
<b>Technical notes</b>	See the HPE IMC Standard or Enterprise Platform data sheet for the required software environment.



Most, if not all IT organizations are on a digital transformation journey — each at a different stage. With over 11,000 IT projects conducted and 1.4 million customer interactions each year, [HPE Pointnext Services](#)' 15,000+ experts and its vast ecosystem of solution partners and channel partners are uniquely able to help you at every stage of your digital transformation. We bring together technology and expertise to help you drive your business forward and prepare for whatever is next.

Advisory and Professional Services help you accelerate your digital transformation. [Operational Services](#) help you remove complexity and respond rapidly to business demands.

### **Operational Services from HPE Pointnext Services**

[HPE Pointnext Tech Care](#) provides fast access to product-specific experts, an AI-driven digital experience, and general technical guidance to help enable constant innovation. We have reimagined IT support from the ground up to deliver faster answers and greater value. By continuously searching for better ways to do things—as opposed to just fixing things that break—HPE Pointnext Tech Care helps you focus on achieving your business goals.

- **[HPE Datacenter Care](#)** helps modernize and simplify IT operations. Partner with an assigned account team, access technical expertise, an enhanced call experience gives you priority access, choose hardware and software support, implement proactive monitoring to help stay ahead of issues, and access HPE IT best practices and IP.
- **[HPE Proactive Care](#)** offers an enhanced call experience and helps reduce problems with personalized proactive reports and advice. This also includes collaborative software support for Independent Software Vendors (ISVs), (Red Hat, VMWare, Microsoft, etc.). [Read more](#)
- **[HPE Foundation Care](#)** helps when there is a problem and has a choice of response levels. Collaborative software support is included and provides troubleshooting help for ISVs running on your server. [Read more](#).

### **Other related services**

**[Defective Media Retention](#)** is optional and applies only to Disk or eligible SSD/Flash Drives replaced by HPE due to malfunction.

**[HPE Service Credits](#)** offers a menu of technical services, access additional resources, and specialist skills.

**[HPE Education Services](#)** delivers a comprehensive range of services to support your people as they expand their skills required for a digital transformation.

Consult your HPE Sales Representative or Authorized Channel Partner of choice for any additional questions and support options.



For additional technical information, available models and options, please reference the [QuickSpecs](#)

## HPE GREENLAKE

HPE Greenlake is HPE's market-leading IT as-a-Service offering that brings the cloud experience to apps and data everywhere – data centers, multi-clouds, and edges – with one unified operating model. HPE GreenLake delivers public cloud services and infrastructure for workloads on premises, fully managed in a pay per use model.

If you are looking for more services, like **IT financing solutions**, please [explore them here](#).

**Make the right purchase decision.  
Contact our presales specialists.**



**Chat now (sales)**



**Call now**



**Buy now**



**Share now**



**Get updates**

**Hewlett Packard  
Enterprise**

© Copyright 2021 Hewlett Packard Enterprise Development LP. The information contained herein is subject to change without notice. The only warranties for Hewlett Packard Enterprise products and services are set forth in the express warranty statements accompanying such products and services. Nothing herein should be construed as constituting an additional warranty. Hewlett Packard Enterprise shall not be liable for technical or editorial errors or omissions contained herein.

Parts and Materials: HPE will provide HPE-supported replacement parts and materials required to maintain the covered hardware.

Parts and components that have reached their maximum supported lifetime and/or the maximum usage limitations as set forth in the manufacturer's operating manual, product quick-specs, or the technical product data sheet will not be provided, repaired, or replaced as part of these services.

Image may differ from the actual product  
[PSN5443914CZEN](#), September, 2021.